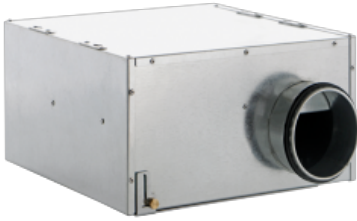


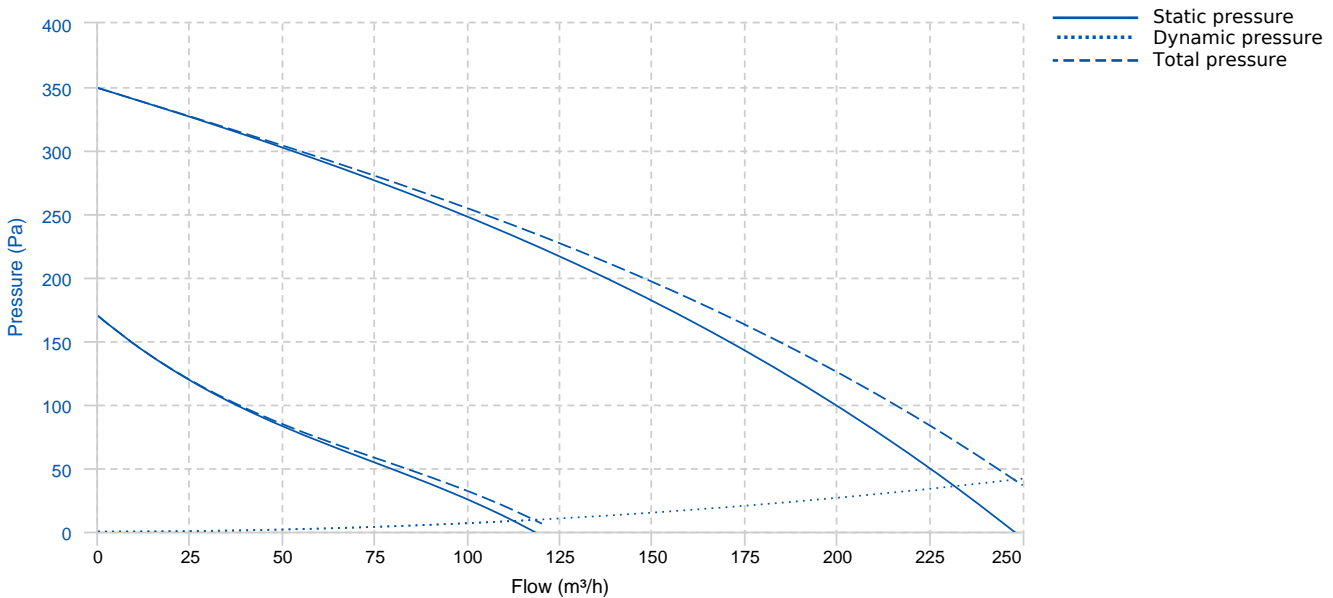
## CA IL 100 (16250)

### GENERAL DATA



- Casing and motor-support made of galvanized sheet steel; lined internally with PE sound-proof panel (thickness 10 mm).
- Circular spigots for connection to standard tubes, equipped with double lip rubber seal for perfect air tightness.
- External rotor AC motorfan, with shaft turning in ball bearings, coupled to a backward curved centrifugal impeller.
- Galvanized steel sheet brackets, directly coupled to casing.
- Electric connection box accomodating capacitors, molded with shock-proof plastic resin resistant against aggressive agents, integrating cable cages and cable glands to ensure high protection (IP55) against dust and water.
- 3 alternative installation: wall, ceiling and false-ceiling.
- Easy maintenance: motor is directly fixed to the cover, in turn hinged to the casing, allowing easy external rotation and motorfan direct access.
- Protection against dust and water: IP44.
- Electric insulation class: I (grounding is required).

### PERFORMANCE CURVE

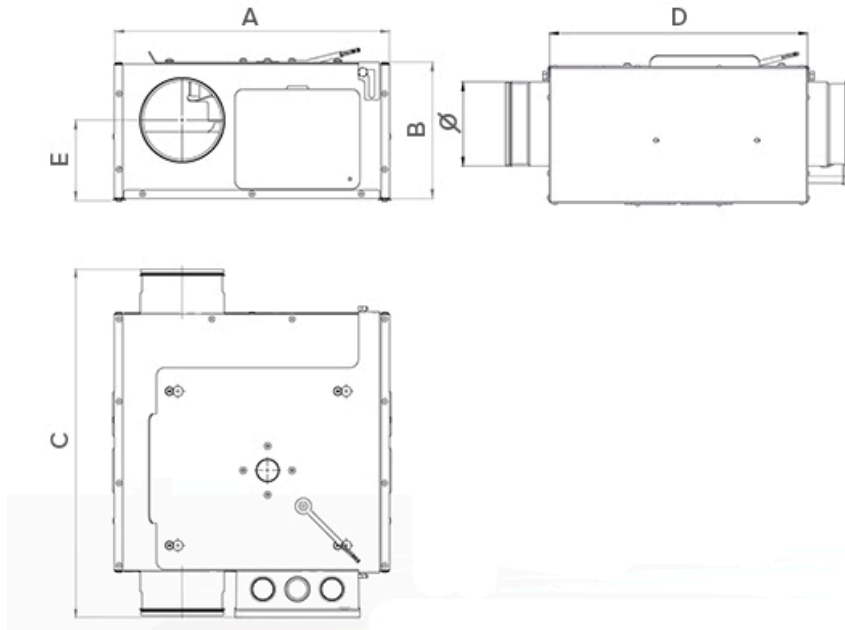


### TECHNICAL DATA

#### Fan

Approx. weight	5.4 kg	Max. Flow	250 m³/h
----------------	--------	-----------	----------

## DIMENSIONS



### Dimensions (mm)

A	327	B	163	C	411.5	D	307	E	94
---	-----	---	-----	---	-------	---	-----	---	----

## ACCESSORIES